



**Location**  
Kelowna, BC

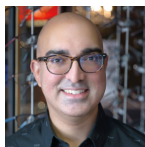


**Device**  
Monaco



**Doctors in Practice**  
One

# The impact of ultra-widefield imaging technology in pediatric optometry



**Dr. Sunil Parekh, OD**  
Rutland Optometry

In the world of pediatric optometry, advancements in imaging technology are transforming how eye care professionals diagnose and manage retinal conditions. One such innovation is the use of ultra-widefield (UWF™) retinal imaging devices like **optomap®**, which provide detailed images of the retina and uncover issues that might otherwise go unnoticed.

Dr. Sunil Parekh, an optometrist in British Columbia, Canada – who reports that around 40% of his patients are under the age of 40 – shares his experiences with his Optos Monaco device and the impact it's had on his practice and patient outcomes.

### Enhanced detection with UWF imaging to uncover hidden pathologies

Dr. Parekh explains how an **optomap** is crucial for identifying and diagnosing hard-to-see pathologies, especially in children. He notes that in pediatric patients who are asymptomatic, a quick look might show everything as normal, and many clinicians will conclude that the retina is otherwise good if the patient is seeing well. However, with UWF, he can pick up pathology that would normally be missed.

“I once had a teenager come in for contact lenses, and I insisted on a full eye exam since it had been a while since he last had one,” recalls Dr. Parekh. “Using my Optos machine, I discovered a retinal hole in the far periphery that had fluid filling into it. This was something a simple visual check would have missed, and the patient wouldn't have known he had a problem until it was too late. I referred him to an ophthalmologist, ultimately saving this from becoming a very major problem down the road.”

“It's like having a second set of eyes. I still perform dilation, but the Optos actually enhances dilation, giving me a comprehensive view and ensuring nothing is missed. It just makes me feel like I'm catching anything and everything, and it has significantly improved my practice and patient outcomes.”

The **optomap** includes a fundus autofluorescence (**optomap af**) feature, which highlights retinal structures that are invisible to the naked eye. This capability helps detect significant issues such as optic nerve damage and visual field defects that exams without this technology may miss.

“When examining the optic nerve, it might appear normal, but the autofluorescence can show abnormalities lighting up like a Christmas tree,” says Dr. Parekh. “You can’t really see what’s going on with the naked eye, but the **optomap** shows you so much more, giving you a significantly better understanding of what’s going on.”

#### Patient reactions, education, and positive feedback

Patients often react with surprise and appreciation when shown images of their eyes, especially when pathology is detected. The visuals provided by the Optos software, **OptosAdvance™**, makes the abstract concept of eye health tangible for them. This often sparks a newfound interest in understanding the intricacies of their vision and the importance of regular check-ups.

Dr. Parekh notes, “They start to understand the importance of comprehensive eye exams almost immediately. Many are used to quick, routine checks. They think it’s all eye charts and ‘is lens 1 better or is lens 2 better?’ But when patients get to see detailed images of their eyes, they suddenly realize the depth of the exam. It’s a eureka moment for them, and they really appreciate how crucial their eye health is.”

Feedback from parents about the use of the **optomap** has also been overwhelmingly positive. When parents see the detailed images of their child’s retina, they are often amazed at the level of detail and the ability to detect potential issues early.

“Parents are very grateful, often mentioning that such thorough exams and advanced imaging were never done previously for their kids. This leads to them recommending our practice to friends and family, and then the next thing I know, I’m seeing their friends and family as well! It’s had an impressive effect on increasing our patient flow.”

#### Follow-ups, billing advantages, and efficient referrals

With an **optomap**, eye care professionals can capture detailed images that serve as a reliable baseline for future comparisons. This continuity in imaging allows for the meticulous monitoring of any changes or progression in retinal conditions, ensuring timely intervention and management. This structured approach streamlines billing and follow-ups, alleviating the financial burden that eye care can place on families.

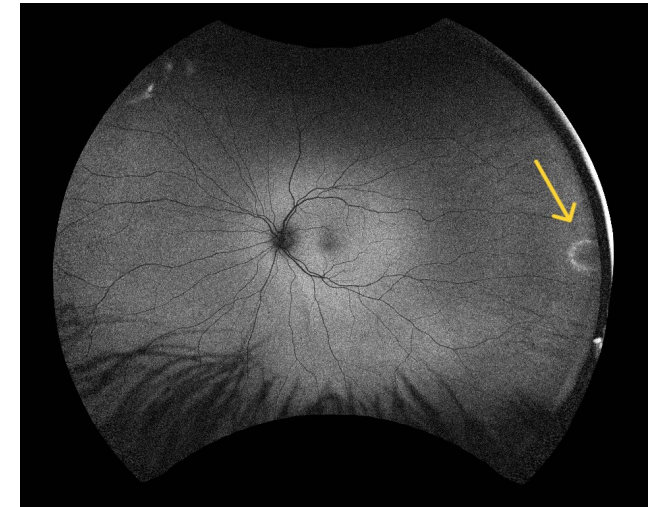
“We can capture detailed UWF™ images and then compare them over time, billing independently for pathology management. This increases follow-ups and keeps our practice busy. For children, I usually charge a small fee initially and manage follow-ups through billing codes, which parents appreciate as they aren’t charged for every visit,” explains Dr. Parekh.

Referrals have also become more efficient with Optos. The ability to provide high-quality images alongside detailed notes ensures that specialists receive comprehensive information about the patient’s condition. This streamlined process not only saves time but also enhances the accuracy and speed of the referral, facilitating better patient care.

“It’s a very simple process to capture images of the pathology,” notes Dr. Parekh. “I just take the screenshot, save it to my desktop, and send an email to the ophthalmologist with a detailed referral letter. This allows them to see precisely what’s going on. It’s really true that a picture says a thousand words!”

#### The importance of regular eye exams and maintaining good eye health

As Dr. Parekh explains, regular eye exams are vital for maintaining good eye health, especially in children. These exams help detect potential eye conditions early, often before any symptoms arrive. Without regular check-ups, major issues can progress unnoticed, leading to severe complications down the road. Regular exams with **optomap** technology ensure that any emerging problems are



identified and managed promptly.

“Early detection is crucial. Many eye conditions are asymptomatic and can lead to severe issues like retinal detachment or amblyopia (lazy eye) if not managed early. Regular exams ensure any problems are caught and treated in time. Additionally, parents should encourage healthy eating habits, ensure children wear sunglasses outdoors, and follow up on any prescribed treatments. We also send out annual reminders for exams and encourage patients, young and old, to come in for a checkup.”

#### Peace of mind with UWF™ technology

The Optos UWF™ device has significantly enhanced Dr. Parekh’s diagnostic confidence. Incorporating advanced imaging technology like **optomap** in pediatric optometry ensures thorough eye exams, early detection of pathologies, and better patient education and satisfaction. As Dr. Parekh’s experience shows, these innovations are vital for maintaining and improving children’s eye health.



**Optos UK/Europe**  
+44 (0)1383 843350  
ics@optos.com

**Optos North America**  
800 854 3039  
usinfo@optos.com

**Optos DACH**  
DE: 0800 72 36 805  
AT: 0800 24 48 86  
CH: 0800 55 87 39  
ics@optos.com

**Optos Australia**  
+61 8 8444 6500  
auinfo@optos.com

Contact us:

